

695 Victoria Drive

New-Modern-Convenient-Value

\$595,000



Discover this newly built, high-quality fourplex that combines modern design, energy efficiency, and attainable ownership. Thoughtfully developed by Parallel 50—one of the South Okanagan's most trusted design-build firms—this project reflects a proven track record of craftsmanship and attention to detail.

Each 1,439 sq. ft. unit features a smart, functional layout with three bedrooms, two and a half bathrooms, and generous yard and patio space. Located in a walkable, bike-friendly neighbourhood, you're just minutes from downtown Penticton and Okanagan Lake. Interior highlights include durable, stylish luxury vinyl plank flooring, quartz countertops, a full-height quartz backsplash, and a designer kitchen that rivals those found in single-family homes. Notable features at this price point include a walk-in closet and ensuite in the primary bedroom, as well as a unique, dedicated area with its own separate entrance—complete with laundry, storage, and a third bathroom.

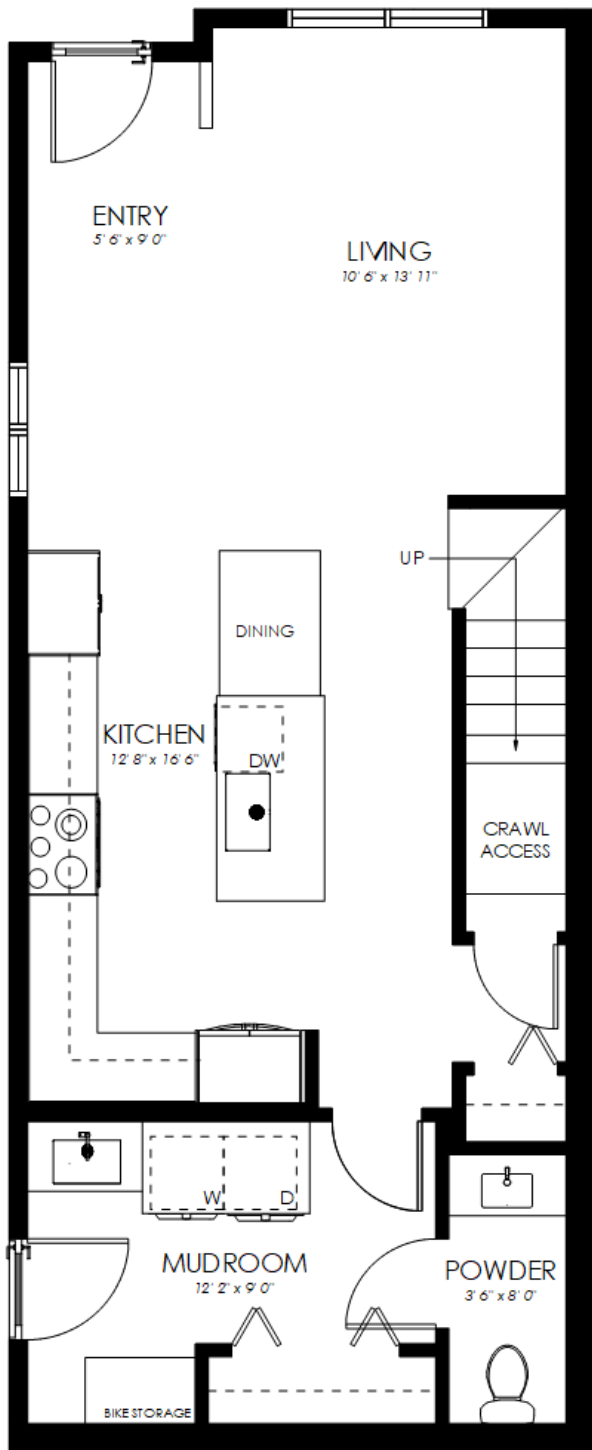
Built to Zero Carbon Code standards, these homes are solar- and EV-ready, and meet BC Step Code 4, exceeding current energy-efficiency requirements. With affordable strata fees and a low-maintenance exterior, this is a rare opportunity to own a modern, efficient home in a prime location. Eligible first-time buyers may also qualify for a full GST rebate, adding even more value.



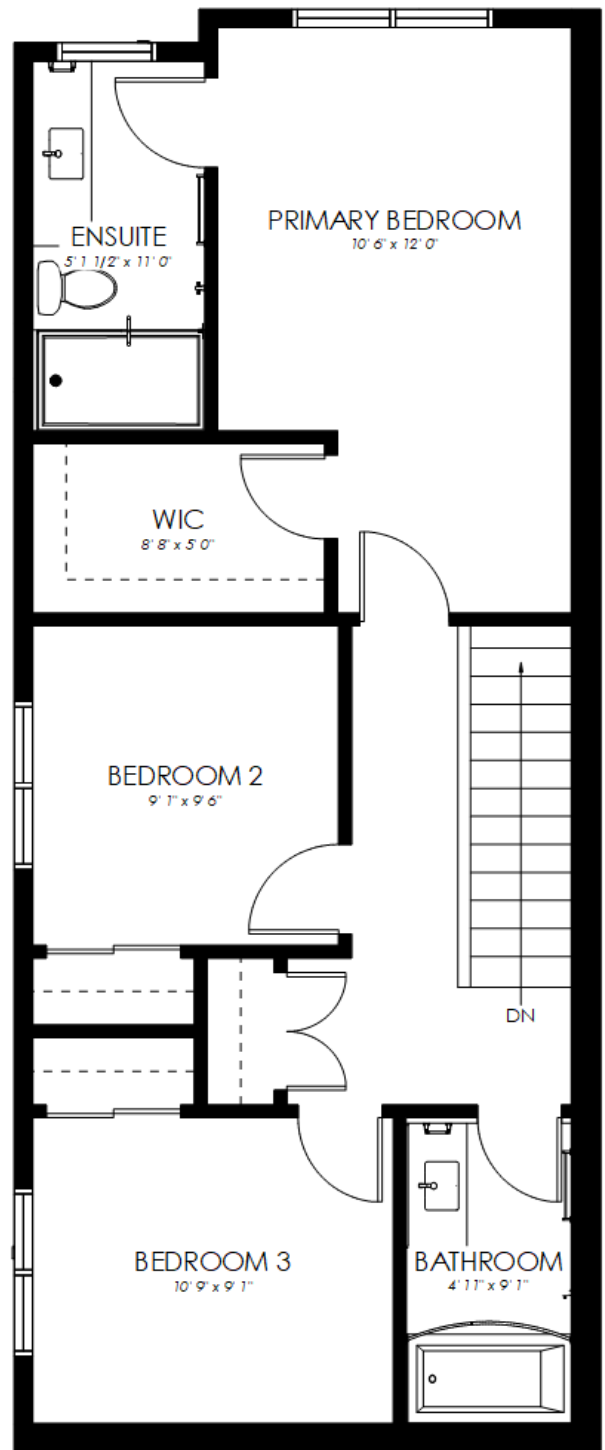
w | 250-486-4282
@ | info@teamgreen.ca

Green
REAL ESTATE GROUP

Thoughtful Floor Plans



MAIN FLOOR



UPPER FLOOR



w | 250-486-4282
@ | info@teamgreen.ca

Green
REAL ESTATE GROUP



w | 250-486-4282
@ | info@teamgreen.ca

Green
REAL ESTATE GROUP



w | 250-486-4282
@ | info@teamgreen.ca



Specifications and Finishings

GENERAL CONSTRUCTION

- 2/5/10 New Home Warranty (National)
- Fiber cement siding
- 1ft Roof Overhang
- Double stud insulated party wall
- 9' ceilings throughout main level (except under bulkheads)
- 8' ceilings throughout upper level
- 140sq.ft. uncovered concrete patio off living room
- Double glazed, low-e, argon filled vinyl windows (white inside / white outside)
- Fully landscaped, u/g irrigation, xeriscape with draught resident plants
- Painted drywall throughout
- Textured (knock-down) ceilings
- R-24 wall insulation
- R-50 ceiling insulation
- Engineered floor joists
- 36" exterior man doors
- Wall sconce exterior lighting at patio and side door
- Recessed pot light over front door
- Exterior GFI electrical outlet at front patio
- 1x exterior frost-free hose bib at patio

INTERIORS

- Luxury vinyl plank flooring throughout (incl. stairs)
- MDF trim package
- White switches and receptacles
- Shaker interior doors
- LED 4" pot lights throughout
- Stained Wood Handrail



w | 250-486-4282
@ | info@teamgreen.ca



Specifications and Finishings

KITCHEN & DINING

- Quartz countertops
- Matte black faucet with pulldown spray
- Double undermount sink
- Shaker style doors
- Island with overhang for seating
- Stainless Whirlpool dishwasher
- Stainless Whirlpool refrigerator w/bottom freezer
- Stainless Whirlpool electric range
- Stainless Whirlpool slimline microwave above range
- Soft close doors and drawers
- Custom dining table, laminate topped birch slab w/ metal “U”-legs

BATHROOMS

- Quartz countertops
- Matte black faucets
- Vanity mirrors
- Vanity lights above sinks
- Undermount American Standard sinks
- Pot light over tub/shower units
- One piece fiberglass tub and shower combo unit in main bath
- Walk-in shower with fiberglass base insert and semi-frameless glass door
- Power Bath Fan(s) and GFI receptables

UTILITY SERVICES

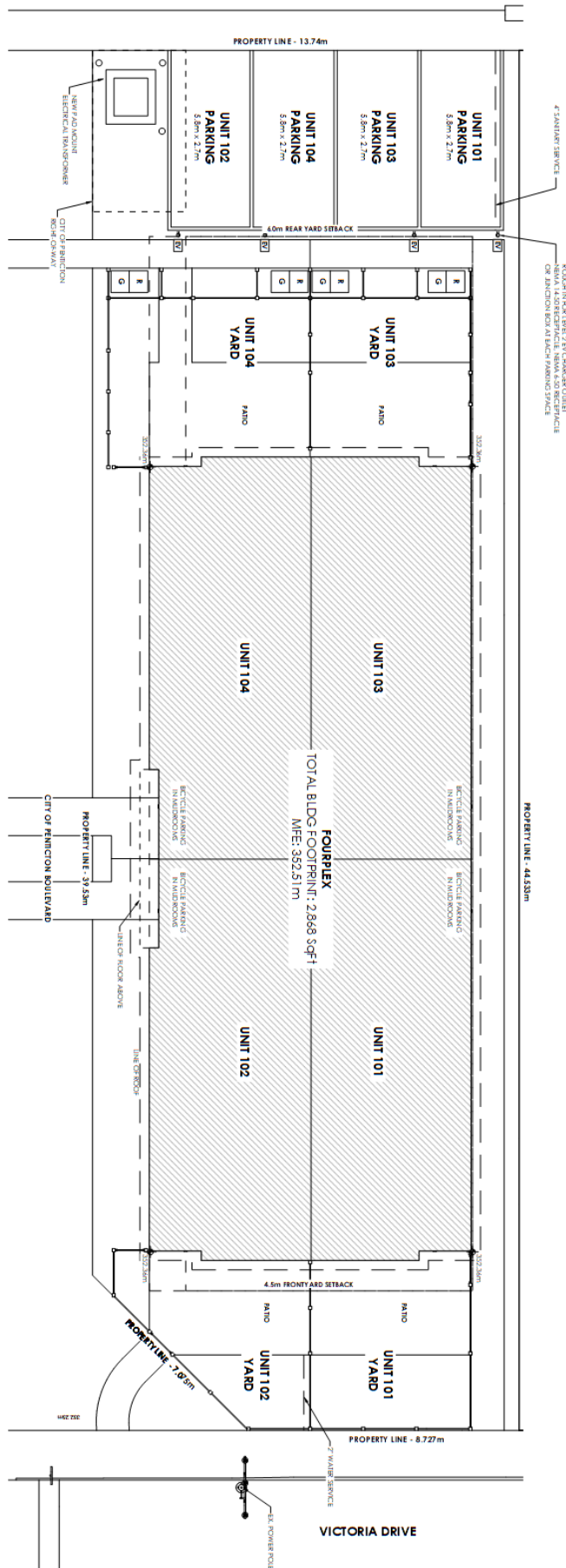
- 150 Amp Electrical Service
- Electric Heat Pump heating and cooling system
- Electric furnace (backup) system
- John Wood 40 Gallon Electric hot water tank
- Whirlpool Stacked Washer and Dryer (white)
- Smoke / Carbon Monoxide detector (s)
- Communication outlets: LR and MBR
- EV Charger rough-in located in rear parking space



w | 250-486-4282
@ | info@teamgreen.ca



LANEWAY



Proudly Marketed by

Green

"not your typical" REAL ESTATE GROUP

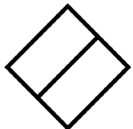
info@teamgreen.ca | www.teamgreen.ca
201-3115 Skaha Lake Penticton BC V2A 6G5



JOHN GREEN
PERSONAL REAL ESTATE CORP
250-486-5353



NATASHA BADGER
PERSONAL REAL ESTATE CORP
250-462-8733



PARALLEL 50
CONSTRUCTION



VICTORIA DRIVE

Receipt of this information brochure does not constitute any type of agency relationship between the recipient and or, Chamberlain Property Group, John Green Personal Real Estate Corp and Natasha Badger Personal Real Estate Corp. The information contained herein is for general information purposes only. It makes no guarantees or warranties of any kind regarding the content's accuracy. Recipients should perform their own due diligence as to the accuracy or contents contained herein.